

# Celebrity **X** Cruises®

SAIL BEYOND®



Click

**Departing April 11- 18, 2027**  
**Celebrity Summit**  
**7-Night Western Caribbean Cruise**



## Sailing Stitches 2027



**Needlepoint Cruise**  
**with Toni Gerdes & Kathy Rees!**



Day Number	Day of Week	Date	Port	Arrival Time	Departure Time	
1	Sunday	04/11/27	Tampa, Florida		4:00 PM	Boarding Ship
2	Monday	04/12/27	At Sea			
3	Tuesday	04/13/27	Cozumel, Mexico	7:00 AM	7:00 PM	Docked
4	Wednesday	04/14/27	Belize City, Belize	9:30 AM	6:00 PM	Tendered
5	Thursday	04/15/27	Puerto Costa Maya, Mexico	8:00 AM	5:00 PM	Docked
6	Friday	04/16/27	At Sea			
7	Saturday	04/17/27	At Sea			
8	Sunday	04/18/27	Tampa, Florida	7:00 AM		Depart Ship







**"Live Your Life by a Compass, not a Clock"**



[▶ 360° Virtual Tour](#)



[▶ 360° Virtual Tour](#)



[▶ 360° Virtual Tour](#)



**Prime Inside Stateroom from  
\$2759.00 per person\***



**Prime Ocean View Stateroom from  
\$2884.00 per person\***



**Prime Veranda Stateroom from  
\$3234.00 per person\*\***

*\*Prices are per person, based on double occupancy, all beds separate to two twins.*

DRINKS, WI-FI, TIPS.  
*Always* INCLUDED

Celebrity **X** Cruises®  
SAIL BEYOND™

**MORE SPACE. MORE OPTIONS. MORE  
LUXURY.**

This special group Celebrity Cruise includes the following;

- 7- Night cruise aboard the Celebrity Summit in chosen stateroom accommodations.
- All meals on-board ship in complimentary venues, including 24 hour room service (a nominal convenience fee may apply) classic beverage package; unlimited beers, spirits, cocktails, liqueurs, wines by the glass, up to \$12 USD per serving, sodas, juices, specialty coffees and bottled water.
- Gratuities & Surf WIFI package.
- On-board entertainment including stunning acrobatic shows, theatrical experiences, and musical entertainment, night clubs, comedy clubs, bars, lounges, etc. provided by Celebrity Cruises.
- Age appropriate kids programming for toddlers, kids, and teens, use of all fitness facilities, pools, hot tubs, sports courts, etc.
- Taxes, fees and port charges.
- Nightly exclusive group dining, cocktail party, meet & greets with special guests; Toni Gerdes of Toni Gerdes Needlearts and Kathy Rees of Needle Delights Originals!

**\*To participate and have access to this exclusive group event, the cruise must be booked with RGE Travels.**

**\*\* Optional customized group pre-cruise 1-night tour of Tampa, Florida, shop hop & transfer to ship, and embroidery sewing classes/retreat at sea will be available at additional cost, details and registrations forthcoming.**



# SPECIAL GUESTS & TEACHERS



**Toni Gerdes** holds Teachers' certification from the National Academy of Needlearts specializing in canvas embroidery. She currently serves on the Board of ANG as Vice President of Education. She served on the NAN board as the Director of Education for 9 years after serving 5 years as Assistant Director of Teachers' Certification. She has also served on the Board of Directors for several ANG chapters as Program Chair & President. She is a past President of NETA. She has received numerous awards for her designs as well as, the prestigious NAN Lifetime Achievement Award. Toni has taught for NAN, EGA, and ANG, as well as guilds & shops. She has been published in Needlepointers, Needlepoint Now, Piecework Magazine, and in Needle Arts as the Artist Across America. She enjoys all types of stitching and especially sharing her knowledge with others.

She currently resides in Colorado. See pictures of her work at

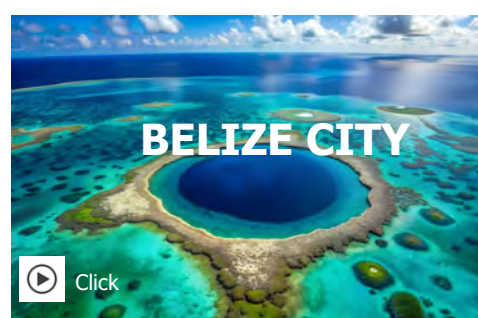
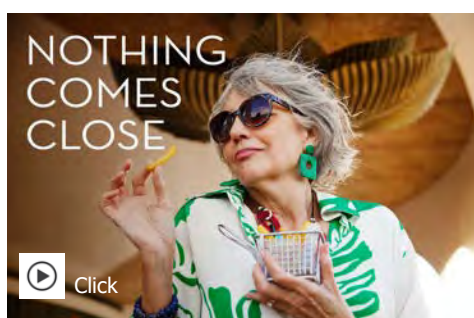
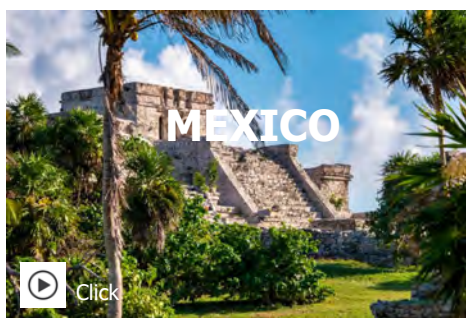
[WWW.TONIGERDES.COM](http://WWW.TONIGERDES.COM)

**Kathy Rees** learned to cross stitch at fourteen and has never stopped using a needle. In 1993, she transitioned from her corporate career to the needlework industry, where she operated a brick-and-mortar needlework shop. Kathy began designing and publishing charted needlepoint in 2006, with a focus on geometrics and offering multiple colorways in her designs. Renowned for her distinctive use of color, she is passionate about sharing her expertise with students. In 2011, Kathy closed her shop to dedicate herself entirely to designing and teaching needlework.

[WWW.NEEDEDELIGHTS.COM](http://WWW.NEEDEDELIGHTS.COM)



## GET TO KNOW?



## GET TO KNOW YOUR TRAVEL CONCIERGE



Raymond Evertsen  
Director Travel Concierge  
US Air Force Veteran

The RGE Travels brand is unique as we don't have a "brick and mortar" location so when it's time to meet, we come to you or meet you at a location near you. That's why we are your "Travel Concierge"! As we are US Veterans at RGE Travels, we try to live by our motto: Thank you for giving us the opportunity to serve you! It is amazing how 2 people from opposite sides of the USA have so much in common and that commonality is travel. Both of us have lived in multiple states during our youth and we each ignited our travel bug while serving overseas and during deployments in the US Air Force and the US Army. After the military, our careers in the airline industry and security and real estate didn't quell that inquisitive travel bug and in fact pushed us farther into other destinations. With all that travel and our combined destinations, RGE Travels literally has circled the globe to bring this excitement to your travels. This is the reason why we are asking you to join us on another adventure and mingle with people you never met while enjoying the sights, sounds and surroundings because when you travel with us, you're never alone.



[www.rgetravels.com](http://www.rgetravels.com)



John Heinrich  
Director of Operations  
US Army Veteran

**Traveler Information**

Print name (first/middle/last) EXACTLY as it appears on the Passport you will be using while traveling.

Traveler 1: \_\_\_\_\_

Traveler 2: \_\_\_\_\_

Address: \_\_\_\_\_

City: \_\_\_\_\_ State: \_\_\_\_\_ ZIP: \_\_\_\_\_

Country: \_\_\_\_\_ Email: \_\_\_\_\_

Cell #1: \_\_\_\_\_ Cell #2: \_\_\_\_\_

Roommate's Name (if not Traveler 2): \_\_\_\_\_

**Type of Stateroom Requested** - \* Per person Double Occupancy

\_\_\_ Prime Inside from \$2759.00 USD\* \_\_\_ Prime Oceanview from \$2884.00 USD\*

\_\_\_ Prime Veranda from \$3234.00 USD\*

\_\_\_ Single Occupancy specify stateroom type: \_\_\_\_\_

Deposit per person \$750.00 USD\* Final Payment Due: 11 DEC 26

\*\$300 of deposit nonrefundable per person

**Additional Stateroom Options - Rates provided upon request**

\_\_\_ Aqua Class \_\_\_ Sky Suite \_\_\_ Aqua Suite \_\_\_ Sunset Sky Suite

\_\_\_ Penthouse \_\_\_ Royal Suite \_\_\_ Celebrity Suite

Captains Club Number: \_\_\_\_\_

Crown & Anchor Number: \_\_\_\_\_

**Flight Arrangements Needed**

Airport Departure City: \_\_\_\_\_

Airport Return City: \_\_\_\_\_

Frequent Traveler Number and Airline: \_\_\_\_\_

*\*Air will be booked no later than 90 days before departure.*

**Optional Pre Cruise Package\***

\_\_\_ Optional customized group pre-cruise 1-night hotel, with transfer, with city tour, shop hop and transfer to ship in Tampa, Florida. *\*Details and pricing will be available approximately December 11, 2026.*

**Security Information**

To make your vacation as enjoyable as possible and to assist us in preparing official documentation, please provide the following:

Traveler 1: \_\_\_ Male \_\_\_ Female

Date of Birth (MM/DD/YYYY): \_\_\_\_/\_\_\_\_/\_\_\_\_

If air is included: Add Redress #, if available: \_\_\_\_\_

Passport Number: \_\_\_\_\_ Citizenship: \_\_\_\_\_

City/State/Country of Birth: \_\_\_\_\_

Date of Issue: \_\_\_\_\_ Exp. Date: \_\_\_\_\_

Traveler 2: \_\_\_ Male \_\_\_ Female

Date of Birth (MM/DD/YYYY): \_\_\_\_/\_\_\_\_/\_\_\_\_

If air is included: Add Redress #, if available: \_\_\_\_\_

Passport Number: \_\_\_\_\_ Citizenship: \_\_\_\_\_

City/State/Country of Birth: \_\_\_\_\_

Date of Issue: \_\_\_\_\_ Exp. Date: \_\_\_\_\_

**Passports and VISAS**

All guests must have a valid passport with at least 6 months validity from return date. It is the responsibility of each guest to ensure any applicable visas for all countries visited have been obtained prior to departure. Failure to obtain correct documentation will mean the guest will be unable to participate in particular shore excursions and may be denied boarding and/or entry into certain countries. Meeting necessary passport and visa entry requirements and costs is the sole responsibility of guests.

**Emergency Contact**

Name: \_\_\_\_\_ Relationship: \_\_\_\_\_

Tel: \_\_\_\_\_ Cell: \_\_\_\_\_

**Health**

Some areas on the ship may involve considerable walking, stairs or inclines. Travelers should be in reasonably good health, persons requiring assistance advised to be accompanied by a companion who is capable of and totally responsible for providing assistance. All needs of this nature must be relayed in advance of travel.

Initial here to indicate you have read and understand this: \_\_\_\_\_

\_\_\_ Dietary dietary restrictions, if any: \_\_\_\_\_

\_\_\_ Handicapped /mobility assistance needed - check mark and list below:

\_\_\_\_\_

**Dining:** Exclusive daily group seating at specified same tables each night.  
5:30PM -6:00PM\* - hours of dining room operation vary according to ship schedule.

**Includes:** 7- Night Western Caribbean cruise ship accommodation, taxes, fees and port charges, all meals at complimentary venues, including 24 hour room service (convenience service fee may apply), classic beverage package: beers, spirits, cocktails, liqueurs, wines by the glass (up to \$12 USD each), sodas, juices, specialty coffees and bottled water, gratuities and unlimited Surf Wi-Fi, event gift, entertainment including shows, discos, comedy clubs, bars, lounges, etc. Age appropriate kids programming for toddlers, kids, and teens, use of all fitness facilities, pools, hot tubs, sports courts, etc. and exclusive daily group dinner dining and meet & greets with special guest teachers for Sailing Stitches 2027 with Toni Gerdes and Kathy Rees!

*\*To participate in this special group event cruise, cruise booking must be made through RGE Travels.*

**Excludes:** Airfare, airport transfers, pre hotel/tour, shore excursions, travel insurance, laundry, phone calls, items of a personal nature, custom private group excursion event - to be announced. **Optional sewing and embroidery classes at additional cost details forthcoming.**

**Perks:** Non-suite staterooms

All Included: Classic beverage package\*; gratuities and Surf Wi-Fi

**\*CLICK HERE FOR DETAILED LIST OF BEVERAGE TYPES INCLUDED**

Suites - The Retreat, exclusive restaurant, lounge and outside deck area, premium drinks, premium Wi-Fi, tips, and an onboard credit to spend almost any way you like.

---

#### Travel Insurance:

Travel insurance is available and is strongly recommended. Travel insurance is offered to protect your dollar investment due to unforeseen circumstances and should be purchased within 14 days of your reservation for pre-existing medical condition exclusion waiver protection.

Travel insurance is provided though Travel Guard/TravelEx. For any illness, cancellations or changes, the client will follow Travel Guard's and TravelEx policies and regulations. An optional cost efficient quote will be emailed along with your trip confirmation and can be purchased with your card on file. Alternatively, you're welcome to obtain your own travel insurance.

\_\_\_\_ Check Mark Acknowledgment

**FOR QUESTIONS CLICK HERE**

#### Terms & Conditions

All payments ticketed by Celebrity Cruises will be refunded, less the applicable cancellation fees as outlined below.

**Deposit:** \$750 deposit \$300 of deposit is non-refundable per person

#### Group Refund and Cancellation Schedule Per Person

90 or more days prior to cruise date - \$300 per person

89 to 75 days - \$300 and 25% cruise fare charge per person

74 to 61 days - \$300 and 50% cruise fare charge per person

60 to 31 days - \$300 and 75% cruise fare charge per person

30 to 0 days -100% cruise fare charge per person

100% cruise fare charge per person for no shows or if cancellation is made after travel is scheduled to begin. No refund for unused portions of the trip.

**Itinerary:** RGE Travels/Holiday Cruises & Tours/Network are not responsible for any changes to itinerary before and during cruise by Celebrity Cruise Lines.

**Booking Terms and Conditions:** These conditions incorporate the basis upon which bookings are accepted by RGE Travels/Holiday Cruises & Tours/Network and Celebrity Cruise Lines. By making a booking you are agreeing to these terms & conditions. Conditions on this page do supersede conditions stated in the Brochure however for additional terms and conditions not stated here please refer to the 'Booking Conditions and other Important Information' pages on website and [www.celebritycruises.com](http://www.celebritycruises.com). These must be studied prior to making the commitment of paying the deposit as they must be referred to. Additional terms and conditions may be applicable to group bookings and will be advised as they become known.

**All guests will be required to adhere to all health and safety protocols established by Celebrity Cruise Lines at time of cruise. For more information concerning present protocols go to [www.celebritycruises.com](http://www.celebritycruises.com).**

**Talent/Artist:** RGE Travels/Holiday Cruises & Tours are not responsible for the content or cancellation of talent/artist before and during cruise.

**I have read, understand and agree to all terms and conditions, including penalties that result in the event of a cancellation.**

Traveler 1: \_\_\_\_\_

Traveler 2: \_\_\_\_\_

Date: \_\_\_\_\_

**Typed full name will be used as signature**

---

#### RESERVATION PROCESS

**CLICK LOGO TO REQUEST BOOKING**

*\*This booking form for informational purpose only*



Affiliate of

